

# Guide to Planning Cancer Professional Development

## PART 1

A Cancer Network Train the Trainer  
Initiative from Cancer Australia

Welcome to PART 1 of the Guide to Planning Cancer Professional Development, a Cancer Australia initiative to support Cancer Networks.

*The aim of this presentation is to :*

Guide you through the process of planning, delivering and evaluating a professional development for your own cancer services network.

The complete presentation is in four parts and aims to guide you through the process of planning, delivering and evaluating professional development for your own service network.

This presentation will guide you in developing a  
**Draft Cancer Professional Development Plan**  
for discussion in an online forum



Online Forum

A networked online forum focusing on specific issues around professional development such as: overcoming barriers; interprofessional education; meeting service delivery needs.

The forum will provide you with practical solutions to implementing and evaluating activities.

The presentation has been designed to help you prepare a first draft professional development plan that you can discuss with colleagues and experts in the advertised online forums.

## Presentation Structure

### PART 1:

Using the Cancer Learning Website

### PART 2:

Drafting a Cancer Professional Development Plan

### PART 3:

Planning and Carrying Out an Evaluation

### PART 4:

Delivering a Professional Development Program

The 4 parts of the presentation will guide you to explore key documents, templates and resources through the Cancer Learning website. The aim is that by the end of PART 4 you will have a first draft Cancer Professional Development Plan that you can refine after your online discussions with colleagues and planning experts.

## How will this presentation help?

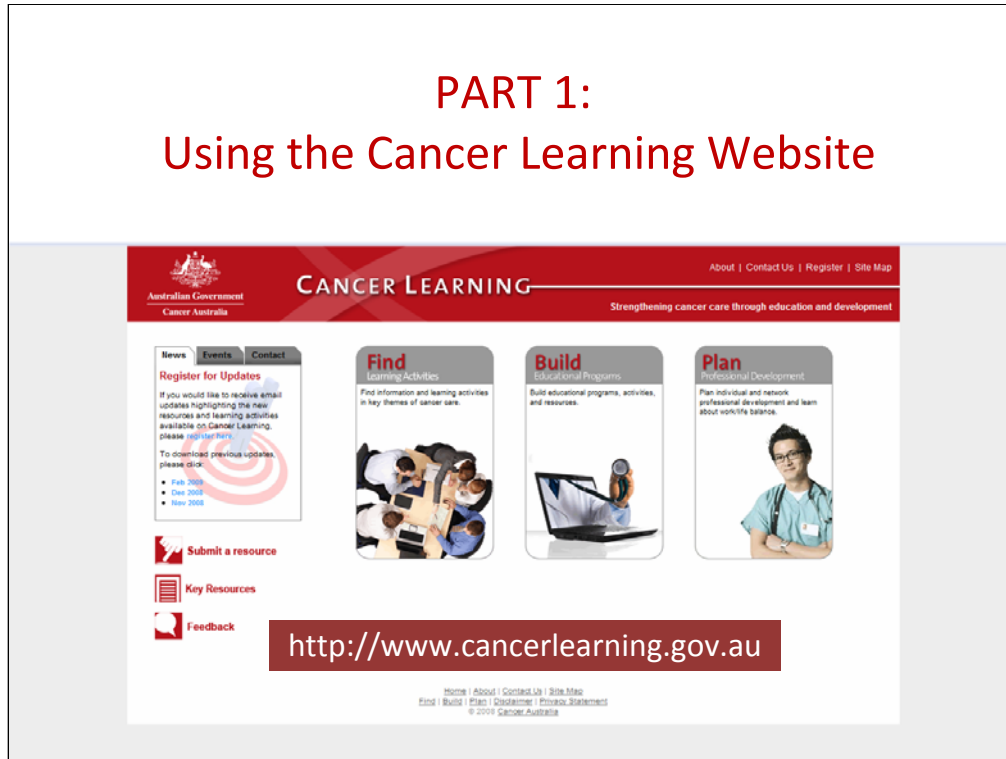
*By giving you guidance to:*

1. Locate professional development activities and resources currently available on the Cancer Learning website
2. Draft a professional development plan based on the Cancer Professional Development Framework
3. Consider the most effective way to evaluate and implement your plan

By the end of the presentation you should be able to:

- Firstly, locate professional development activities and resources currently available on the Cancer Learning website.
- Secondly, draft a professional development plan based on the Cancer Professional Development Framework,
- And lastly, consider the most effective way to evaluate and deliver your plan.

# PART 1: Using the Cancer Learning Website



PART 1 will help you find out what is already available to support cancer professional development by introducing you to Cancer Australia’s Cancer Learning website which you can find at [www.cancerlearning.gov.au](http://www.cancerlearning.gov.au)

## The Main Menu

### Find

#### Learning Activities

Find information and learning activities in key themes of cancer care.



### Build

#### Educational Programs

Build educational programs, activities, and resources.



### Plan

#### Professional Development

Plan individual and network professional development and learn about work/life balance.



<http://www.cancerlearning.gov.au>

The key to using Cancer Learning is to understand the purpose of its three main menus: FIND, BUILD and PLAN:

## The Main Menu

**Find**  
Learning Activities  
Find information and learning activities in key themes of cancer care.



**Build**  
Educational Programs  
Build educational programs, activities, and resources.



**Plan**  
Professional Development  
Plan individual and network professional development and learn about work/life balance.



A comprehensive list of learning activities and resources

FIND reveals a comprehensive list of current learning activities and resources covering the key themes and practice areas in cancer.

## The Main Menu



Helps build new learning activities and programs and review existing ones

BUILD is designed to help you build new learning activities and professional development programs and review existing ones.

## The Main Menu

### Find Learning Activities

Find information and learning activities in key themes of cancer care.



### Build Educational Programs

Build educational programs, activities, and resources.



### Plan Professional Development

Plan individual and network professional development and learn about work/life balance.



Network and individual professional development; potential career pathways and work life balance

PLAN helps with network and individual professional development as well as potential career pathways and work life balance. We'll now look at each of these main menus in a little more detail.

## Find

Learning Activities

Find information and learning activities in key themes of cancer care.



## What's under "Find"?

### (THEMES)

- Evidence and treatments
- Fundamentals of oncology
- Coordination of care
- Multidisciplinary care
- Supportive care
- Key resources

### (PRACTICE AREAS)

- Adolescent and Young Adult
- CALD
- Clinical Practice Improvement
- Geriatric
- Indigenous
- Paediatric
- Palliative Care
- Primary Care referral Toolkit
- Work/Life Balance



Submit a resource



Feedback

The resources listed under FIND are grouped into two categories: overall themes in cancer care and specific areas of professional practice. You can also submit a resource for appraisal or provide feedback on what you've found.

## Find

Learning Activities

Find information and learning activities in key themes of cancer care.



# What's under "Find"?

## Evidence Based Practice and Latest Treatments

### Introduction


A range of information and resources are available regarding latest treatments and evidence based practice. The development and maintenance of these resources is costly and time consuming. It can also be time consuming for health professionals to search for specific information or resources. This area of the hub aims to bring together key resources in one place for easy access and identification of potential gaps.




"The Cancer Learning Hub is an opportunity to easily access and search for updated information and key resources regarding latest treatments and evidence based practice".

*Associate Professor David Goldstein, Immediate Past President, Clinical Oncological Society of Australia (COSA)*



Each theme or area in FIND has an introduction to describe the scope and purpose of its resource collection. The themes are introduced by leading cancer professionals from the field's peak bodies



Find information and learning activities in key themes of cancer care.



## What's under "Find"?

 **Multidisciplinary Care** 

**Resources**  
[Guidelines for the Safe Prescribing, Dispensing and Administration of Cancer Chemotherapy](#)

**Organisation:** Clinical Oncological Society of Australia

**Content:** Guidelines regarding the safe prescribing, dispensing and administration of chemotherapy and related agents used in the treatment of cancer.

**Format:** Web-based PDF

**Target audience:** Specialists - all

**Accessibility:** Publicly available - no restrictions

**Cost:** Free of charge

**Country of Origin:** Australia

**URL:** <http://www.cosa.org.au/File/Members%20Area/Projects/Reports/Guidelines%20for%20Chemo%20book.pdf>

Each of FIND's learning activities and resources has been appraised and is summarized to help you determine whether it will meet your needs. The information in the summary includes:

- Organisation
- Content
- Format
- Target audience
- Accessibility
- Cost
- Country of origin

At the end of this part of the presentation in the "What have I learnt so far?" section, you will have the chance to test your own navigation skills to find specific resource information.

## Build Educational Programs

Build educational programs,  
activities, and resources.



# What's under "Build"?

## Key Documents

### Professional Development Frameworks

- [Cancer Australia Professional Development Framework](#)
- [EdCaN National Professional Development Framework for Cancer Nursing](#)
- [National Service Improvement Framework for Cancer Services \(NISIF\)](#)
- [Professional Development Packages Project Phase One Report](#)

### Oncology Curricula


- [Ideal Oncology Curriculum for medical schools](#)

### State and Territory Cancer Plans

[NSW](#), [VIC](#), [SA](#), [NT](#), [TAS](#), [WA](#), [QLD](#), [ACT](#)


The Key Documents in the BUILD menu provide access to essential references to guide the building of new professional development activities. These are critical references for anyone looking to build a new program that aligns with currently accepted professional development and service guidelines.





**Plan**  
Professional Development

Plan individual and network professional development and learn about work/life balance.



## What's under "Plan"?

**For Professionals**

**How to develop a professional development plan**

- [Assess](#)
- [Prioritise](#)
- [Find](#)
- [Record & reflect](#)
- [Review](#)

**Your Professional Pathway**

- [Clinical Research Pathway](#)
- [Dietetics Pathway](#)
- [Nursing Pathway](#)
- [Pharmacy Pathway](#)
- [Physiotherapy Pathway](#)
- [Radiation Therapy Pathway](#)
- [Social Work Pathway](#)
- [Professional Bodies \(PDF 164kb\)](#)

**For Networks**

1. Aligning a professional development plan with network service priorities?
2. Deciding strategies to support for professional development?
3. Finding out what activities and resources are available?

**For Work/Life Balance**

- Services for Health Professionals
- Workshops
- Guides
- Websites
- Articles and reports

The PLAN menu mobilises your forward planning in professional development, either as an individual cancer professional or as professional development coordinator on behalf of a service network.

It also includes links to guidance and programs dealing with the essential topic of "Work Life Balance"


Using PLAN as an individual health professional will help you develop your own professional development plan. It gives you an educationally sound planning template and learning activity suggestions. If you already have a career path in mind PLAN will ask you where you are currently in your professional development and then show you the next possible step to achieving your professional goals for that career pathway.

If you are a coordinating network professional development, PLAN helps you develop a network professional development plan and gives you access to the resources to implement and evaluate it.

The Work Life Balance resources have been designed for all health professionals.


**Find**  
Learning Activities

Find information and learning activities in key themes of cancer care.



## Providing feedback

Exit this survey >>



**CANCER LEARNING**

Submit Resource

Exit this survey >>

Please use the form below to submit a resource for evaluation to be included on the Cancer Learning hub.

1. Resource name:

2. Resource publisher:

3. Contact person

Email:

Telephone:

4. URL (if relevant):

5. Date of development:

6. Date of update:

7. Developer name:

8. Funder name (if different):

9. If resource is public

Remember you can submit a new resource or provide feedback on any part of the site using a simple online form. Cancer Australia will use this feedback to keep the website accurate and up to date.

Submit resources at: <http://www.cancerlearning.gov.au/>

Provide feedback at: <http://www.cancerlearning.gov.au/feedback/>

## What have I learnt so far?

<http://www.cancerlearning.gov.au>

Now follow the link below to  
test your Cancer Learning  
navigation skills

What have you learnt so far? Open up the Cancer Learning website and follow the link below to test your site navigation skills.